

## Features

Standard Features	Easily Configured To Meet Your Needs	Options & Accessories
-------------------	--------------------------------------	-----------------------

### Measurements

- 20.39 m (66 ft 4 in) working height
- 11.05 m (36 ft 3 in) horizontal reach
- 8.23 m (27 ft) up and over clearance
- Up to 227 kg (500 lbs) lift capacity

### Productivity

- Self-levelling platform
- Hydraulic platform rotation
- Proportional joystick controls
- Thumb rocker steering
- Drive enable
- AC power cord to platform
- Horn
- Hour meter
- Tilt alarm
- Descent & travel alarms
- Flashing beacon
- 360° continuous turntable rotation
- Locking turntable covers
- Zero tailswing
- Positive traction drive
- 2 speed wheel motors
- Certified load sensor

### Power

- 12V DC auxiliary power
- Engine protection package
- Anti-restart engine protection
- Auto engine fault shutdown
- Intake air heater (Deutz engine)

### Platform Options

- Steel 2.44 m (8 ft) (standard)
- Steel 1.83 m (6 ft)
- 2.44 m (8 ft) tri-entry\*\*

### Jib

- Articulating 1.83 m (6 ft) jib boom

### Engine Options

- Deutz diesel 35.8 kW (48 hp)
- Perkins diesel 38 kW (51 hp)

### Drive Options

- 2 x 4
- 4 x 4

### Axle Options

- Active oscillation (standard on 4WD)
- Non-oscillating

### Tyre Options

- Rough terrain air-filled (standard)
- Rough terrain foam-filled
- Rough terrain non-marking (air or foam-filled)
- Sealant treated air-filled

### Productivity Options

- Platform top auxiliary rail
- Weld leads to platform <sup>(1)</sup>
- Hydraulic oil cooler <sup>(2)</sup>
- Air line to platform
- Power to platform (incl. plug, socket and ground fault interrupt leakage on request)
- Work lights package (2 on chassis, 2 on platform)
- Dual axis joystick steering
- Biodegradable hydraulic oil <sup>(1)</sup>
- Aircraft protection kit <sup>(1,2)</sup>: platform foam padding and padded disable system
- Hostile environment kit <sup>(1)</sup>: cylinder bellows, boom wiper seals platform and ground control box covers
- Deluxe hostile environment kit <sup>(1,2)</sup> adds to basic kit center turntable shield, ring gear guard, tail pipe guard, engine cover flaps and air pre-cleaner
- Tilt cut-out option
- Track & Trace <sup>(3)</sup> (GPS unit providing machine location & operating information)
- Panel cradle package <sup>(1,2)</sup>
- Lockable platform control box covers
- Tool tray
- Operator Protective Structure
- Operator Protective Alarm

### Power Options

- Engine gauge package
- AC generator packages (110V/60Hz 220V/50Hz, 3000W) <sup>(1)</sup>
- Hydraulic MTE Generator kit (110V/120V-220V/240V)
- Diesel air intake pre-cleaner <sup>(1,2)</sup>
- Diesel catalytic scrubber muffler <sup>(1)</sup>
- Low temperature cut-out module
- Engine heater <sup>(2)</sup>
- Refinery kit with spark arrestor and electric or mechanical Chalwyn valve <sup>(2)</sup>



<sup>(1)</sup> Factory-fit option only

<sup>(2)</sup> Available on selected models only. See your Genie representative for further information.

<sup>(3)</sup> Includes a first 2 years subscription



Unit A12/A13  
Kenyon Court  
Walter Leigh Way  
Moss Industrial Estate  
Leigh, WN7 3PT



0800 085 3709



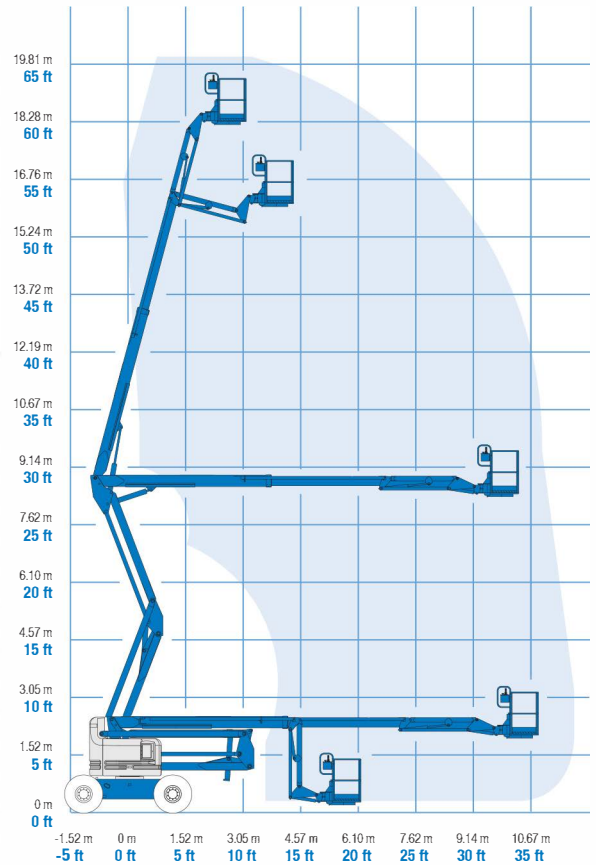
info@aerialplatforms.co.uk



### Specifications

Model	Z-60/34	
Measurements	Metric	US
Working height maximum*	20.39 m	66 ft 4 in
Platform height maximum	18.39 m	60 ft 4 in
Horizontal reach maximum	11.05 m	36 ft 3 in
Up and over clearance maximum	8.23 m	27 ft
<b>A</b> Platform length - 8 ft / 6 ft model	0.91 m / 0.76 m	3 ft / 2 ft 6 in
<b>B</b> Platform width - 8 ft / 6 ft model	2.44 m / 1.83 m	8 ft / 6 ft
<b>C</b> Height - stowed	2.69 m	8 ft 10 in
<b>D</b> Length - stowed	8.15 m	26 ft 9 in
<b>E</b> Width	2.46 m	8 ft 1 in
<b>F</b> Wheelbase	2.51 m	8 ft 3 in
<b>G</b> Ground clearance - center	0.41 m	1 ft 4 in

### Range Of Motion Z-60/34



### Productivity

Lift capacity	227 kg	500 lbs
Platform rotation	180°	180°
Vertical jib rotation	90°	90°
Turntable rotation	360° continuous	
Turntable tailswing	zero	zero
Drive speed - stowed 2WD - 4WD	4.8 km/h	3.0 mph
Drive speed - raised**	1.1 km/h	0.68 mph
Lift speed to full height	42 sec	42 sec
Gradeability - 2WD - stowed***	25%	25%
Gradeability - 4WD - stowed***	40%	40%
Turning radius - inside	3.04 m	10 ft
Turning radius - outside	6.07 m	19 ft 11 in
Controls	12V DC proportional	
Tyres	355/55 D625	

### Power

Power source	Deutz D2011L03i 3-cylinder diesel 35.8 kW (48 hp) Perkins 404D-22 4-cylinder diesel 38.0 kW (51 hp)	
Auxiliary power unit	12V DC	12V DC
Hydraulic tank capacity	170.3 L	45 gal
Fuel tank capacity	75.7 L	20 gal

### Sound & Vibration Levels

Sound pressure level (ground workstation)	84 dBA	84 dBA
Sound pressure level (platform workstation)	75 dBA	75 dBA
Vibration	<2.5 m/s <sup>2</sup>	<8 ft 2 in/s <sup>2</sup>

### Weight\*\*\*\*

CE 4WD (air tyres)	10,215 kg	22,520 lbs
CE 4WD (foam filled tyres)	11,231 kg	24,760 lbs

### Standards Compliance

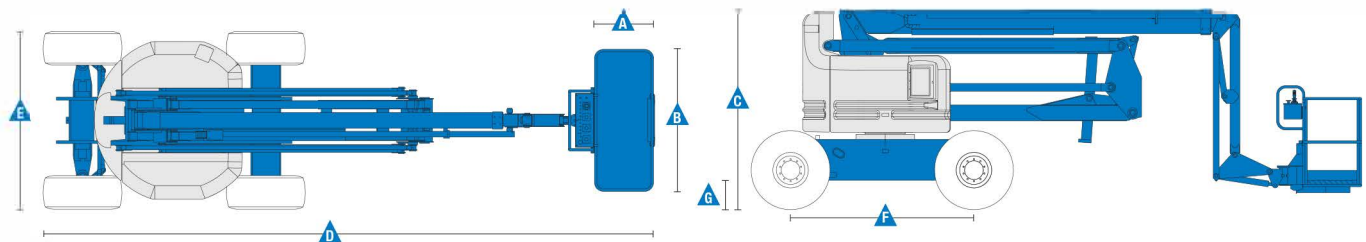
EU Directives: 2006/42/EC - Machinery  
(harmonized standard EN280:2001+A2:2009); 2004/108/EC (EMC); 2000/14/EC (Outdoor Noise)

\* The metric equivalent of working height adds 2 m to platform height. U.S. adds 6 ft to platform height.

\*\* In lift mode (platform raised), the machine is designed to operate on firm, level surfaces only.

\*\*\* Gradeability applies to driving on slopes. See operators manual for details regarding slope ratings.

\*\*\*\* Weight will vary depending on options and/or country standards.



Unit A12/A13  
Kenyon Court  
Walter Leigh Way  
Moss Industrial Estate  
Leigh, WN7 3PT