

Features

Standard Features	Easily Configured To Meet Your Needs	Options & Accessories
-------------------	--------------------------------------	-----------------------

Measurements

- 25.77 m (84 ft) working height
- 18.29 m (60 ft) horizontal reach
- 8.83 m (29 ft) up and over clearance
- Up to 227 kg (500 lbs) lift capacity

Productivity

- 1.83 m (6 ft) jib with 135° range
- Self-levelling platform
- Hydraulic platform rotation
- Proportional joystick controls
- Thumb rocker steering
- On board diagnostics
- Hydraulic oil cooler
- Drive enable
- AC power cord to platform
- Horn
- Hour meter
- Tilt alarm
- Descent & travel alarms
- Flashing beacon
- 360° continuous turntable rotation
- Locking turntable covers
- Full-time positive traction drive
- Two speed wheel motors
- Four steering modes: front, rear, crab and coordinated
- Configurable controls to limit lift height to 70 ft
- Certified load sensor

Power

- 12 V DC auxiliary power
- Anti-restart engine protection
- Auto engine fault shutdown
- Engine monitoring display
- Dual battery
- Engine status display

Platform Options

- Steel 2.44 m (8 ft) (standard)
- Steel 1.83 m (6 ft)
- 2.44 m (8 ft) tri-entry

Jib

- Articulating 1.83 m (6 ft) jib boom

Engine Options

- Deutz diesel 55 kW (74 hp)
- Perkins diesel 47 kW (63 hp)

Drive/Steer Options

- 4 x 4 (standard)
- 4 x 4 x 2 (standard)
- 4 x 4 x 4

Axle

- Active oscillation

Tyre Options

- Rough terrain foam-filled (standard)
- Rough terrain non-marking foam-filled



Productivity Options

- Platform top auxiliary rail
- Weld leads to platform ⁽²⁾
- Air line to platform
- Power to platform (incl. plug, socket and ground fault interrupt leakage on request)
- Work lights package (2 on chassis, 2 on platform)
- Dual axis joystick steering
- Biodegradable hydraulic oil ⁽²⁾
- Aircraft protection kit ^(1,2): platform foam padding and platform disable system
- Hostile environment kit ⁽²⁾: cylinder bellows, boom wiper seals, platform and ground control box covers
- Deluxe hostile environment kit ^(1,2): adds to basic kit center turntable shield, ring gear guard, tail pipe guard, engine cover flaps and air pre-cleaner
- Track & Trace ⁽³⁾ (GPS unit providing machine location & operating information)
- Lockable platform control box covers
- Tool tray
- Operator Protective Structure
- Operator Protective Alarm

Power Options

- AC generator packages (110V/60Hz - 220V/50Hz, 3000W) ⁽²⁾
- Hydraulic MTE Generator kit (110V/120V-220V/240V)
- Deutz V-Belt Generator kit (110V/120V) ⁽¹⁾
- Diesel air intake pre-cleaner ⁽²⁾
- Diesel catalytic scrubber muffler ⁽²⁾
- Low temperature cut-out module
- Engine heater option ⁽¹⁾
- Refinery kit with spark arrestor and electric or mechanical Chalwyn valve ⁽¹⁾

⁽¹⁾ Available on selected models only. See your Genie representative for further information.

⁽²⁾ Factory-fit option only

⁽³⁾ Includes a first 2 years subscription



Unit A12/A13
Kenyon Court
Walter Leigh Way
Moss Industrial Estate
Leigh, WN7 3PT



0800 085 3709



info@aerialplatforms.co.uk



Specifications

Model	Z-80/60	
-------	---------	--

Measurements	Metric	US
Working height maximum*	25.77 m	84 ft
Platform height maximum	23.77 m	78 ft
Horizontal reach maximum	18.29 m	60 ft
Up and over clearance maximum	8.83 m	29 ft
Below ground reach	4.83 m	15 ft 10 in
A Platform length - 8 ft / 6 ft	0.91 m/0.76 m	3 ft/2 ft 6 in
B Platform width - 8 ft / 6 ft	2.44 m/1.83 m	8 ft/6 ft
C Height - stowed	3.00 m	9 ft 10 in
D Length - stowed	11.27 m	37 ft
E Length - transport	11.27 m	37 ft
F Width	2.49 m	8 ft 2 in
G Wheelbase	2.85 m	9 ft 4 in
H Ground clearance - center	0.30 m	12 in

Productivity

Lift capacity	227 kg	500 lbs
Platform rotation	160°	160°
Vertical jib rotation	135°	135°
Turntable rotation	360° continuous	
Turntable tailswing - riser up	1.17 m	3 ft 10 in
Turntable tailswing - riser down	2.24 m	7 ft 4 in
Drive speed - stowed	4.83 km/h	3.0 mph
Drive speed - raised**	1.1 km/h	0.68 mph
Lift speed to full height	88 sec	88 sec
Gradeability - 2WD - stowed***	30%	30%
Gradeability - 4WD - stowed***	45%	45%
Turning radius - 2WS inside	4.42 m	14 ft 6 in
Turning radius - 2WS outside	7.47 m	24 ft 6 in
Turning radius - 4WS inside	2.13 m	7 ft
Turning radius - 4WS outside	4.57 m	15 ft
Controls	12 V DC proportional	
Tyres	18-625 NHS	

Power

Power source	Deutz TD 2011 L04i 4 cylinder diesel 74 hp (55 kW) Perkins 804D-33 4 cylinder diesel 63 hp (47 kW)	
Auxiliary power unit	12 V DC	12 V DC
Hydraulic tank capacity	170 L	45 gal
Fuel tank capacity - diesel machines	132.5 L	35 gal
Fuel tank capacity - gas/LPG machines	113.6 L	30 gal

Sound & Vibration Levels

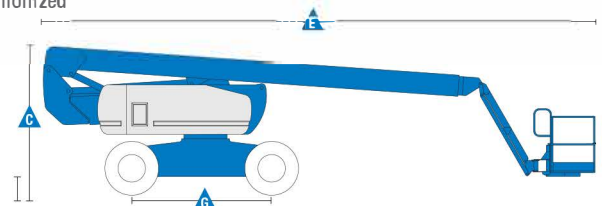
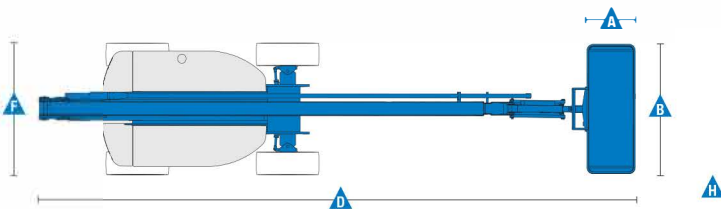
Sound pressure level (ground workstation)	85 dBA	85 dBA
Sound pressure level (platform workstation)	74 dBA	74 dBA
Vibration	<2.5 m/s ²	<8 ft 2 in/s ²

Weight****

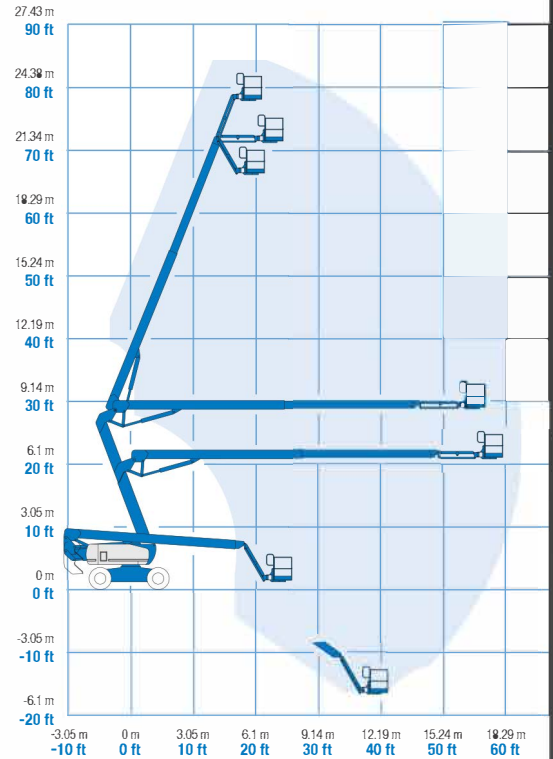
CE 4WD/2WS	16,284 kg	35,900 lbs
CE 4WD/4WS	17,010 kg	37,500 lbs

Standards Compliance

EU Directives: 2006/42/EC - Machinery (harmonized standard EN280:2001+A2:2009); 2004/108/EC (EMC); 2000/14/EC (Outdoor Noise)



Range Of Motion Z-80/60



* The metric equivalent of working height adds 2 m to platform height. U.S. adds 6 ft to platform height.

** In lift mode (platform raised), the machine is designed to operate on firm, level surfaces only.

*** Gradeability applies to driving on slopes. See operator's manual for details regarding slope ratings.

**** Weight will vary depending on options and/or country standards.



Unit A12/A13
Kenyon Court
Walter Leigh Way
Moss Industrial Estate
Leigh, WN7 3PT



0800 085 3709



info@aerialplatforms.co.uk

