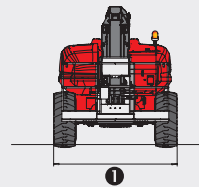
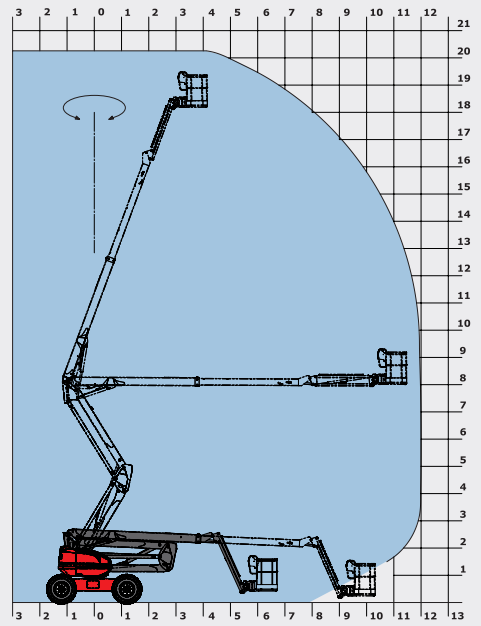
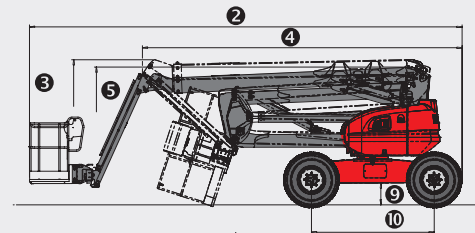


# 200 ATJ

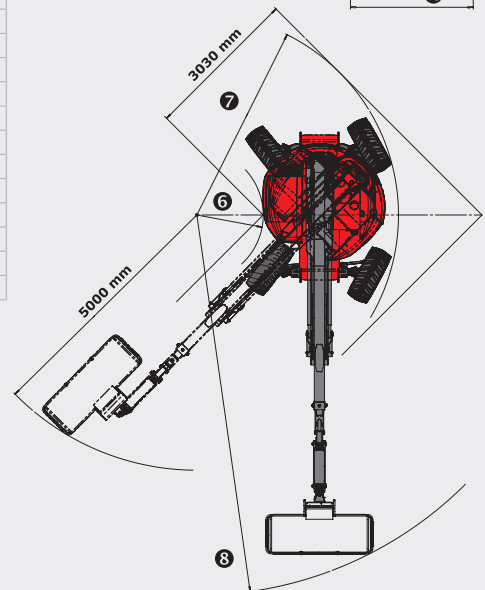
		200 ATJ
	<b>Working height</b>	20.00 m
	<b>Platform height</b>	18.00 m
	<b>Articulation height</b>	8.00 m
	<b>Outreach</b>	12.00 m
	<b>Jib tilting</b>	+70°/-70°
	<b>Basket rotation</b>	+90°/-90°
	<b>Turret rotation</b>	355°
	<b>Capacity</b>	230 kg
	<b>Number of persons</b> (indoor/outdoor)	2/2
	<b>Basket</b> (width and length)	2.10 x 0.80 m
	<b>1. Overall width</b>	2.40 m
	<b>2. Overall length</b>	8.50 m
	<b>3. Overall height</b>	2.70 m
	<b>4. Overall length when folded</b>	6.30 m
	<b>5. Overall height when folded</b>	3.15 m
	<b>6. Inside turning circle</b>	1.30 m
	<b>7. Outside turning circle</b>	3.95 m
	<b>8. Turning Radius</b> (basket)	7.45 m
	<b>9. Ground clearance</b>	43 cm
	<b>10. Wheelbase</b>	2.40 m
	<b>Speed of forward movement</b>	4.70 kph
	<b>Working speed</b>	0.80 kph
	<b>Maximum slope accessible</b>	40%
	<b>Maximum tilt</b>	5° - 9%
	<b>Tyres</b>	20"
	<b>Driving wheels</b>	4
	<b>Steering/directional wheels</b>	4
	<b>Weight</b> (varies according to options & standards of the country)	10 000 kg
	<b>Engine</b>	KUBOTA V2403-M
	<b>Power</b>	45 HP
	<b>Environmental noise</b> (LwA)	101 dB



1



2



3

## Standard equipment

- Proportional levers
- 4 simultaneous movements
- 4 wheel drive
- 4 wheel steer
- Wheels crab position
- Foam filled tyres
- Differential Lock
- Front Axle limited slip differential
- On Board Diagnostics
- Hour meter
- Fuel gauge with low level warning
- Tool box
- Protective cover with optional locking
- Horn
- Beacon
- Audible and visual display alarm for excessive slope
- Code Protected Machine Set Up
- Hooks for sling loading/lifting
- Electric Pump
- Predisposition 230V
- Dead man pedal

## Optional equipment

- Oscillating Axle
- Continuous Rotation
- Onboard generator (3.50 kVA)
- Onboard generator (5 kVA)
- 230V power input with differential circuit-breaker
- Predisposition compressed air
- Predisposition of water
- Working light
- Special paint
- Biodegradable oil
- Warning Alarm for all movements
- Warning Travel Alarm
- Catalytic Converter
- Spark Arrester and overrun valve
- Anti Theft code
- Certificate of verification
- Safety harness
- High capacity battery



0800 085 3709  
[WWW.AERIALPLATFORMS.CO.UK](http://WWW.AERIALPLATFORMS.CO.UK)

**HIRE NOW!**