



## ELECTRIC-ARTICULATING BOOM LIFT

# A14JE-LI

### Li-Ion

- A14JE-Li is lithium battery powered. Maintenance free with triple the lifespan of a traditional lead-acid battery.
- Quick-charge technology, long battery life, full power. BMS system can protect and monitor lithium batteries in real time.
- A14JE-Li can be used from  $-30^{\circ}\text{C}$  to  $60^{\circ}\text{C}$ , with the ability to adapt to high and low temperatures.
- Accurate and efficient AC drive system with strong power and stable control.
- Intelligent self-diagnosis system for quick troubleshooting and cost saving.



0800 085 3709

[WWW.AERIALPLATFORMS.CO.UK](http://WWW.AERIALPLATFORMS.CO.UK)

Aerial Platforms Ltd, Denebrook Court, Greenfold Way, Leigh, WN7 3FZ

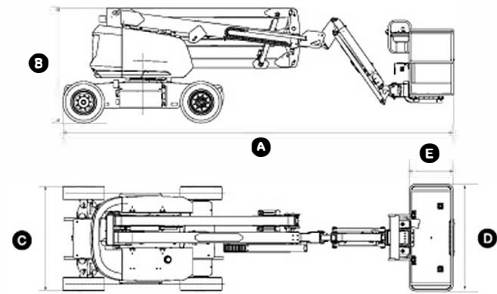
**HIRE NOW!**

 PART OF THE CENTURION GROUP

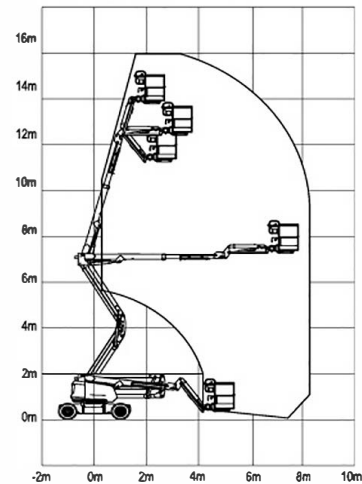
# LGMG Electric - Articulating Boom Lift

## SPECIFICATIONS

Measurements		Metric	US
Working Height	m/ft	15.8	51.8
Platform Height(Raised)	m/ft	13.8	45.3
Horizontal Outreach	m/ft	7.81	25.6
Up and Over Height	m/ft	7.26	23.8
<b>A</b> Stowed Length	m/ft	6.66	21.9
<b>B</b> Stowed Width	m/ft	1.8	5.9
<b>C</b> Stowed Height	m/ft	1.98	6.5
<b>D</b> Platform Size Length	m/ft	1.83	5.9
<b>E</b> Platform Size Width	m/ft	0.76	2.6
Wheelbase	m/in	2.03	80
Ground Clearance	m/ft	0.24	0.79
Productivity			
Platform Occupants Max. (In/Out)		2 / 2	
Platform Capacity	kg/lbs	230	510
Turning Radius-Inside	m/ft	1.83	6
Turning Radius-Outside	m/ft	4.1	13.5
Turntable Rotation		355°	
Turntable Tailswing		0	
Max. Drive Speed (Stowed) km/h mph		4.8	3
Max. Drive Speed (Raised) km/h mph		1	0.62
Gradeability -Stowed		30%	
Tire Type		Foam-filled non-marking	
Tire Size	mm/in	719x246	28.3x9.7
Power			
Power Source		48V, DC 390Ah	
Hydraulic Oil Capacity	L/gal	30	7.9
Machine Weight	kg/lbs	7500	16535



Working Range



### STANDARD FEATURES

Proportional control	On-board diagnostic system
Tilt alarm with lift cut-out	Over tilt protection system
Overload sensing system	Anti-collision device
Descent alarm with flashing beacon	Horn/Hour meter
Platform auto-leveling system	Full-height drive
Emergency stop button	Platform tool box

### OPTIONAL

AC power to platform	Solid non-marking tires
Telematics	

Please contact LGMG or a local dealer for more details.

LGMG reserves the right to change technical data without prior notice. All photos and pictures in this brochure are for promotional purposes only. This brochure comes into effect in May, 2022.

### LINGONG HEAVY MACHINERY CO., LTD.

Address: No. 2676, Kejia Road, Jinan, Shandong, China  
Email: sales@lgmg.com.cn Tel: +86 531 6787 9283

LGMG Europe S.p.A.



# 0800 085 3709

WWW.AERIALPLATFORMS.CO.UK

# HIRE NOW!

Aerial Platforms Ltd, Denebrook Court, Greenfold Way, Leigh, WN7 3FZ

PART OF THE CENTURION GROUP