

450AJ

ARTICULATING BOOM LIFT

BOOM LIFT



KEY SPECS

Platform Height

45-ft / 13.72-m

Up and Over Height

24-ft / 7.3-m

Horizontal Outreach

25-ft / 7.62-m

Platform Capacity

550-lb / 250-kg

KEY FEATURES

- Improved multifunction capability for increased productivity.
- Provides durability and serviceability with DuraTough hood design.
- Delivers a zero calibration automatic load sensing system that eliminates the need to use external weights to calibrate the machine.
- Optimized 550-lb platform capacity for occupants and tools.

ACCESSORIES & OPTIONS

- 1/2-in Airline to Platform
- 43.5-lb Propane Tank
- AC Generator, 2500W
- Accessory Packages:
 - SkyGlazier® Package
 - SkyPower® Package
 - SkyWelder® Package
- Arctic Package¹
- Cold Weather Package²
- Hostile Environment Package³
- Hostile Environment Extreme Package⁴ (2WS Only)
- Light Packages
- Platform Mesh to Mid or Top Rail
 - Aluminum or Plastic
- Platforms
 - Drop Bar, 30 x 36-in, 30 x 48-in, 30 x 60-in, 30 x 72-in
 - Fall Arrest, Rear Entry, 30 x 60-in
- Inward Self-Closing Swing Gate, 30 x 48-in, 30 x 60-in, 30 x 72-in
- SkySense® Enhanced Detection System
- Soft Touch
- Tow Bar
- Welder Ready Package
- White Noise Alarm

1. Includes Arctic Hydraulic Hoses (Drive And Steer Only) And Main Boom Cable, Extreme Cold Engine Oil, Fuel Conditioner, Engine Block Heater, Battery Blanket, Glow Plugs, Hydraulic Tank Heater, Oversized Foot Switch and Arctic Hydraulic Oil.

2. Includes Battery Blanket, Hydraulic Tank Heater, Engine Block Heater Pad.

3. Includes Console Cover, Boom Wipers and Cylinder Bellows.

4. Hostile Environment Package Required; Includes Shields Over Turntable Swivel, Pinion Gear, Turntable Bearing, and Fire Resistant Wrap Over Drive and Steer Hoses.

*Certain Options or Country Standards Increase Weight.

**Provides Indicator Lights at Platform Control Console for System Distress, Low Fuel, Degree Tilt Light and Foot Switch Status.

Not All Options Can Be Outfitted On the Same Machine; Consult Factory for Compatibility. Additional Accessories and Options Available Via JLG Aftermarket.

STANDARD SPECIFICATIONS

Performance

Platform Height	45-ft / 13.72-m
Horizontal Outreach	25-ft / 7.62-m
Up and Over Height	24-ft / 7.3-m
Swing	355 Degrees Non-Continuous
Platform Capacity	550-lb / 250-kg
Platform Rotator	180 Degrees Hydraulic
Jib	4-ft 1-in / 1.24-m
Range of Articulation	145 Degrees (+76, -69)
Weight*	14,150-lb / 6,418-kg
Max. Ground Bearing Pressure	65 psi / 4.57 kg/cm ²
Drive Speed	4.25 mph / 6.8 km/h
Gradeability 2WD / 4WD	30% / 45%
Tilt Cut Out	5 Degrees
Axle Oscillation	4-in / 10-cm
Turning Radius Inside	6-ft 9-in / 2.06-m
Turning Radius Outside	15-ft 8-in / 4.78-m

Engine

Dual Fuel – Kubota WG2503	60 hp / 44 kW
Diesel Fuel – Deutz D2.9L4 Tier 4 Final	49 hp / 36.4 kW
Fuel Tank Capacity	16 gal / 60.6 L

Tires

Standard	Foam Filled, 33/1550 x 16.5
Optional	Foam Filled Low Profile Non-marking, IN315/55D20
	Foam Filled Low Profile, IN315/55D20
	Foam Filled Non-marking, 12 x 16.5
	Foam Filled, 12 x 16.5 or 33/1550 x 15.5
	Foam Filled Turf & Sand, 33 x 16LL500
	Solid Low Profile Non-marking, 33 x 12-20

Hydraulic System

System Capacity	17.3 gal / 65.5 L
Tank Capacity	15 gal / 56.8 L
Auxiliary Power	12V DC

STANDARD FEATURES

- 4-ft 1-in (1.24-m) Articulating Jib
- 5 Degree Tilt Alarm/ Indicator Light
- 12V-DC Auxiliary Power
- 110V-AC Receptacle in the Platform
- Cast Aluminum Control Box
- Center Storage Tray
- ClearSky Smart Fleet™ Hardware (CS550)
- Control ADE® System
- Four-Wheel Hydrostatic Drive
- Gull-Wing Turntable Hoods
- Horn
- Hourmeter
- LED Motion/Amber Beacon (CS550)
- Improved Multi-Function Controls
- Lifting/Tie Down Lugs
- Load Sensing System
- Motion Alarm
- Oscillating Axle
- Platform Console Machine Status Light Panel**
- Proportional Controls
- Rapid Replaceable Platform with Self-Closing Gate
- SkyGuard SkyLine™
- Swing-Out Engine Tray
- USB-A and USB-C Charger



0800 085 3709
WWW.AERIALPLATFORMS.CO.UK

HIRE NOW!

Aerial Platforms Ltd, Denebrook Court, Greenfold Way, Leigh, WN7 3FZ

PART OF THE CENTURION GROUP

450AJ

ARTICULATING BOOM LIFT

BOOM LIFT



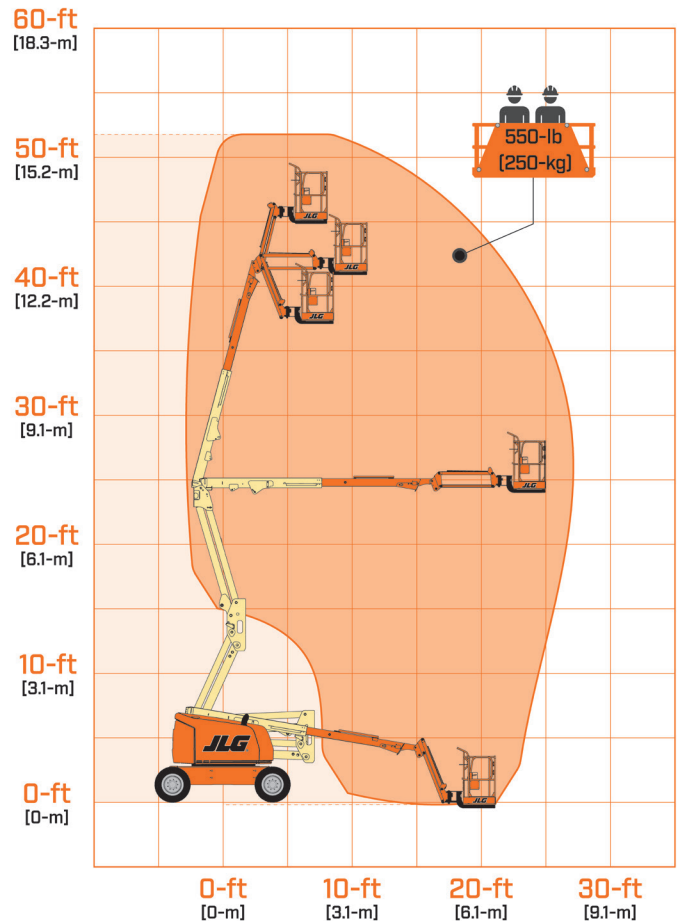
DIMENSIONS

All dimensions are approximate



- A. Platform Width 30-in / 0.76-m
- B. Platform Length 72-in / 1.83-m
- C. Machine Width 7-ft 8.6-in / 2.35-m
- D. Tailswing Zero
- E. Machine Height 7-ft 5.3-in / 2.27-m
- F. Machine Length 21-ft 6.9-in / 6.57-m
- G. Wheelbase 7-ft 9-in / 2.36-m
- H. Ground Clearance 16.4-in / 41.7-cm

REACH DIAGRAM



We provide coverage for one (1) full year, and cover all specified major structural components for five (5) years. Due to continuous product improvements, we reserve the right to make specification and/or equipment changes without prior notification. This machine meets or exceeds applicable ANSI and CSA requirements based on machine configuration as originally manufactured for intended applications. Please reference the serial number plate on the machine for additional information.

Part No. 3131117_450AJ | R0825_04



JLG INDUSTRIES, INC.
Toll-free US 877-JLG-LIFT
JLG.com
An Oshkosh Corporation Business



0800 085 3709
WWW.AERIALPLATFORMS.CO.UK

HIRER NOW!

Aerial Platforms Ltd, Denebrook Court, Greenfold Way, Leigh, WN7 3FZ

PART OF THE CENTURION GROUP