

SPECIFICATIONS

Dimension	Metric	British
Max. Working Height	44.44m	146ft
Max. Platform Height	42.44m	139ft 3in
Max. Operating Range	25.60m	83ft 12in
Max. Platform Range	25.00m	82ft
Flatbed Transport Dimensions (L×W×H)	11.92m×2.44m×2.83m	39ft 1in×8ft×9ft 3in
Standard Container Transport	All Applicable	All Applicable
Overall Width(Axle Expanded)	4.17m	13ft 8in
Overall Width(Axle Retracted)	2.44m	8ft
Platform Size(Length×Width) A	2.44m×0.91m	8ft×3ft
Turntable Tailswing(Axle Expanded)	1.39m	4ft 7in
Turntable Tailswing(Axle Retracted)	2.28m	7ft 6in
Ground Clearance	0.40m	1ft 4in
Wheelbase(Axle Expanded)	4.07m	13ft 4in
Wheelbase(Axle Retracted) B	4.27m	14ft

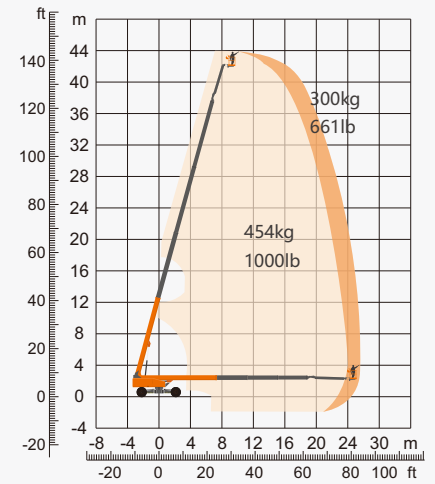
Performance		
S.W.L(Unrestricted/Restricted)	300kg/454kg	661lb/1000lb
Max. Occupants	3	3
Gradeability	45%	45%
Travel Speed(Stowed)	6.0km/h	3.73mph
Travel Speed(Raised)	1.1km/h	0.68mph
Max. Working Slope	5°	5°
Turret Rotation	360°Continuous	360°Continuous
Platform Rotation	180°	180°
Jib Movement	230°	230°
Main Boom Maximum Angle	75°	75°
Turning Radius(Axle Expanded)	2.99m/5.41m	10ft/17ft 9in
Turning Radius(Axle Retracted)	8.27m/10.85m	27ft 2in/35ft 7in
Tyres	445/50-D710	445/50-D710

Weight		
Overall Weight	22500kg	49604lb

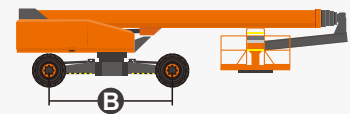
Power		
Emergency Power System	12V	12V DC
Diesel Engine - Deutz TD2.9 L4	Deutz TD2.9 L4/55.4kW	Deutz TD2.9 L4/55.4kW
Diesel Tank	150L	39gal
Hydraulic Tank	230L	61gal



ENGINE



Range Of Motion



FEATURES

Standard Items

- Load Sense System
- 12 V DC Auxiliary Power
- Hydraulic Oil Radiator
- Harsh Environment Kits
- Fault Diagnosis System
- Turntable Protection Lock
- High Stiffness Boom System
- Fully-Opened Chassis Cover
- AC Power Cord To Platform
- Descent & Movement Alarms
- 180° Left & Right Swing Platform
- Platform Rotation Angle Monitoring
- Platform Bottoming Out Protection
- Proportional Joystick Controls
- Loose & Broken Chain Monitoring
- Fast & Slow Speed Monitoring
- Working Condition Monitoring
- Engine Start & Stop Protection
- Rexroth Hydrostatic Drive System
- Automatic Steering Angle Matching
- Drive Forced Shunt & Merge Function
- Negative Pressure Brake With Detection
- Real-Time Machine Status Display System
- Cat.3 Safety Architecture - ISO 13849-1
- Operator Anti-Extrusion Protection System
- Deutz TD2.9 L4 55.4kW 2600rpm Diesel Engine
- 4.2m Amplitude Flexible Jib With Angle Detection
- 360° Turntable Continuous Rotation With Inspection
- Expandable Chassis With Proprietary Patented Design
- Horn
- Tilt Alarm
- Hour Meter
- Drive Enable
- Flashing Beacon
- Four-Wheel Drive
- Four-Wheel Steering
- In-Situ Axle Expansion
- Self-Levelling Platform



Telescopic
Boom-BT



Working
Height-44m



Jib



Diesel Engine



Rough
Terrain-RT



Brand New One-Key In-Situ Axle Expansion Technology
Global Patent Protection



Standard Container Transport

ZHEJIANG DINGLI MACHINERY CO., LTD.

Address: No.188 Qihang Road, Deqing, Zhejiang P.R.C 313219

Telephone: +86(572)8681688

E-Mail: export@cndingli.com

<https://en.cndingli.com>



0800 085 3709

WWW.AERIALPLATFORMS.CO.UK

Aerial Platforms Ltd, Denebrook Court, Greenfold Way, Leigh, WN7 3FZ

HIRE NOW!

PART OF THE CENTURION GROUP